

# Research Administration Practices (RAP) Sessions

## DOE Resources and Updates

October 14, 2020

**Jamie Goldberg**, *Team Manager, Grants & Contract Administration RAS*

**Kim Mann**, *Manager, Research Administration Support, VPR*

*In collaboration with:*

**Lino Gelormini**, *Sr Staff Accountant, VPF*

# Agenda

RAP Sessions: Targeted skills based educational offerings open to the Research Administration community at MIT. Information gathered and shared with attendees can be taken back to their desks and applied immediately.

- Introductions
- The DOE Agency and organizational structure
- DOE proposal submissions and solicitations
  - Grants.gov (KC S2S or Workspace)
  - ARPA-E
  - EERE eXCHANGE
    - November 2020 changes from EERE eXCHANGE to EPIC
- Managing DOE Awards
  - Payments
  - Renewals
  - Reports
- Questions/Help

# Introductions

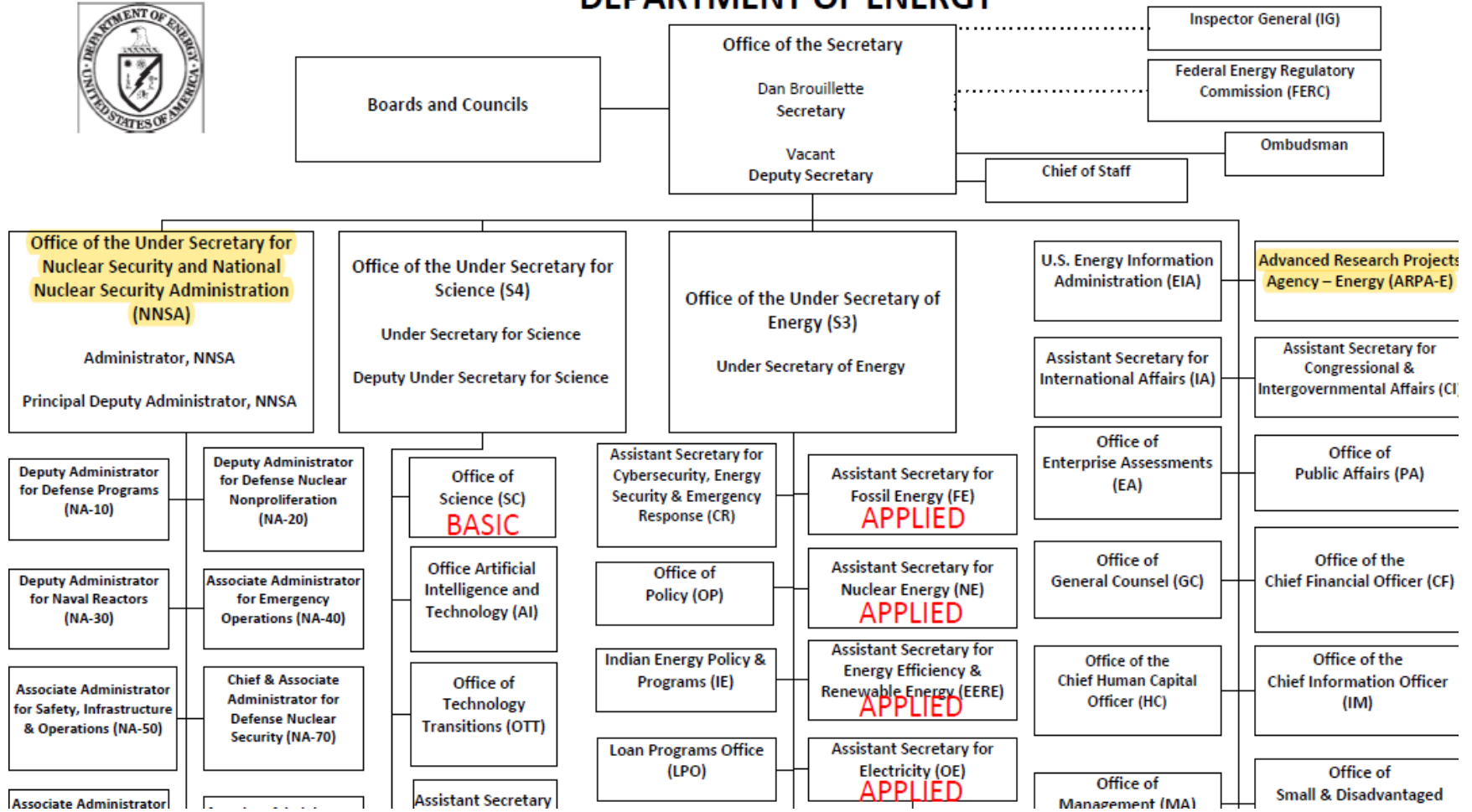
**Jamie Goldberg**, *Team Manager Grants & Contract Administration, RAS; MIT Liaison for DOE*

**Lino Gelormini**, *Sr Staff Accountant, VPF-Sponsored Accounting; DOE and other Federal Agencies*

**Kim Mann**, *Manager Research Administration Support, VPR*



# DEPARTMENT OF ENERGY



# DOE-Chicago, common programs

- **Advanced Scientific Computing Research Program (ASCR)** <https://www.energy.gov/science/ascr/advanced-scientific-computing-research>
- **Basic Energy Sciences Program (BES)**
- <https://www.energy.gov/science/bes/basic-energy-sciences>
- **Biological and Environmental Research Program (BER)**
- <https://www.energy.gov/science/ber/biological-and-environmental-research>
- **Fusion Energy Science Program (FES)**
- <https://www.energy.gov/science/fes/fusion-energy-sciences>
- **High Energy Physics Program (HEP)**
- <https://www.energy.gov/science/hep/high-energy-physics>
- **Nuclear Physics Program (NP)**
- <https://www.energy.gov/science/np/nuclear-physics>
- **Workforce Development for Teachers and Scientists**
- <https://science.osti.gov/wdts>

# DOE Applied Research Programs

- **Electricity (OE)**

- <https://www.energy.gov/oe/office-electricity>
- **PORTAL: Grants.gov via S2S or Workspace. Usually coordinated by the National Energy Technology Laboratory (NETL). Choose KC Sponsor: 000220 DOE-NETL.**

- **Fossil Energy (FE)**

- <https://www.energy.gov/fe/office-fossil-energy>
- **PORTAL: Grants.gov via S2S or Workspace. Usually coordinated by the National Energy Technology Laboratory (NETL). Choose KC Sponsor: 000220 DOE-NETL or 000223 DOE - Office of Fossil Energy.**

- **Nuclear Energy (NE)**

- <https://www.energy.gov/ne/office-nuclear-energy>
- **PORTAL: Grants.gov via S2S or Workspace. Usually coordinated by the National Energy Technology Laboratory (NETL). Choose KC Sponsor: 000220 DOE-NETL.**

# DOE Applied Research Programs, cont'd

- **Energy Efficiency and Renewable Energy (EERE)**
  - <https://www.energy.gov/eere/office-energy-efficiency-renewable-energy>
  - **PORTAL: EERE Exchange, Choose KC Sponsor: 000229 DOE - Office of Energy Efficiency and Renewable Energy**
- **Golden Field Office**
  - <https://www.energy.gov/eere/about-us/business-operations/golden-field-office>
  - Operates as Business Service Center for the EERE.
  - **PORTAL: EERE Exchange, Choose KC Sponsor: 000229 DOE - Office of Energy Efficiency and Renewable Energy or 000216 DOE-Golden Colorado**
- **Idaho Falls**
  - <https://www.id.energy.gov/>
  - **PORTAL: NEUP portal , Choose KC Sponsor: 000212 DOE - Idaho Falls**

# DOE ARPA-E and NNSA

- **Advanced Research Projects Agency – Energy (ARPA-E)**
  - <https://arpa-e.energy.gov/>
  - PORTAL: ARPA-E Exchange. Choose KC Sponsor: 000221 DOE - Office of ARPA-E.
  
- **National Nuclear Security Administration (NNSA):**
  - <https://www.energy.gov/nnsa/national-nuclear-security-administration>
  - PORTAL: Grants.gov, either KC S2S or Workspace. Recommend Workspace because unusual documents are often required.



# DOE Solicitations

• **See Handouts – Review and helpful information for:**

- DOE Chicago
- Fossil Energy
- Idaho Falls
- NETL
- NNSA
- EERE

# EERE eXCHANGE moving to EPIC

- DOE EERE is moving from the portal eXCHANGE to EPIC, effective November 2, 2020
- RAS Liaisons and RA Support Team are currently reviewing these changes and developing a plan for MIT – more information coming soon!
  - System changes
  - Potential Process changes
  - Communications/Education

*Special Note* – follow solicitation instructions for proposal submission. If solicitation notes submission in eXCHANGE, then still use eXCHANGE, even for proposal(s) submitted on or after November 2, 2020

# DOE Award Management

## • Payments

- VPF uses “draw down” to receive payment on DOE Awards (DOE Grants, EERE and ARPA-E)
  - Draw Down is VPF pulling the Money from the Federal Agency based on expenses incurred to date
  - Draw Down is twice/month. First draw down mid-month is based on actual expenses (salary and non salary), while second draw down on 25<sup>th</sup> of month is estimate, as payroll has not posted the actual salary

## • How does this appear in SAP?

- *Summary Statement and DTR Handout example*

# DOE Award Management, con't

- ARPA-E Awards
  - ARPA E often has questions about expenditures (used to be if > \$500, but sometimes if just \$50)
  - VPF works with DLC Administrator(s) to gather explanations and justifications to answer ARPA-E questions.

# DOE Award Management, con't

## • Renewals

- NEW KC account structure
- VPF closes out prior account structure
- Any unexpended balance (or over expenditure) will transfer to the new KC account structure
- FINAL reports would not be due to DOE with new KC account structure established for the Renewal. Only when entire DOE award is expiring will final reports be due.

## • Reporting Checklist (see handout)

# Questions – Help

- RAS Contract Administrator: <https://ras.mit.edu/about-ras/staff/by-department>
- RA Support Team: [RA-help@mit.edu](mailto:RA-help@mit.edu)
- VPF Sponsored Accounting website: <https://vpf.mit.edu/sponsored-accounting>
- Closeouts: [wbscloseout@mit.edu](mailto:wbscloseout@mit.edu)
- General Sponsored Accounting questions: [ask-sponsored@mit.edu](mailto:ask-sponsored@mit.edu)