



What is the Equipment Capitalization Threshold?

Shawna Vogel, Associate Director

Office of Sponsored Programs

Kevin Milligan, Associate Director, Property Office

Office of the Vice President for Finance

Background

- Federal government changed the cap threshold to \$5,000 in the late 1990's
- Most of our peers have already implemented the change
- MIT explored making the change back in 2007; ONR informed of us of the (onerous) requirements, we moved on...
- Now, as we try to simplify our processes, time to move to “less work” on items under \$5,000

Background

- As of 7/1/2013, MIT will begin using a new capitalization threshold of \$5000
- The community has been informed
- MIT must inform sponsors of the change in our proposals for the new \$5000 threshold to be applied
- For equipment received after 7/1/2013 the application of the old or new threshold will depend whether a “\$3K Equipment Threshold” custom element flag is assigned to the WBS by OSP

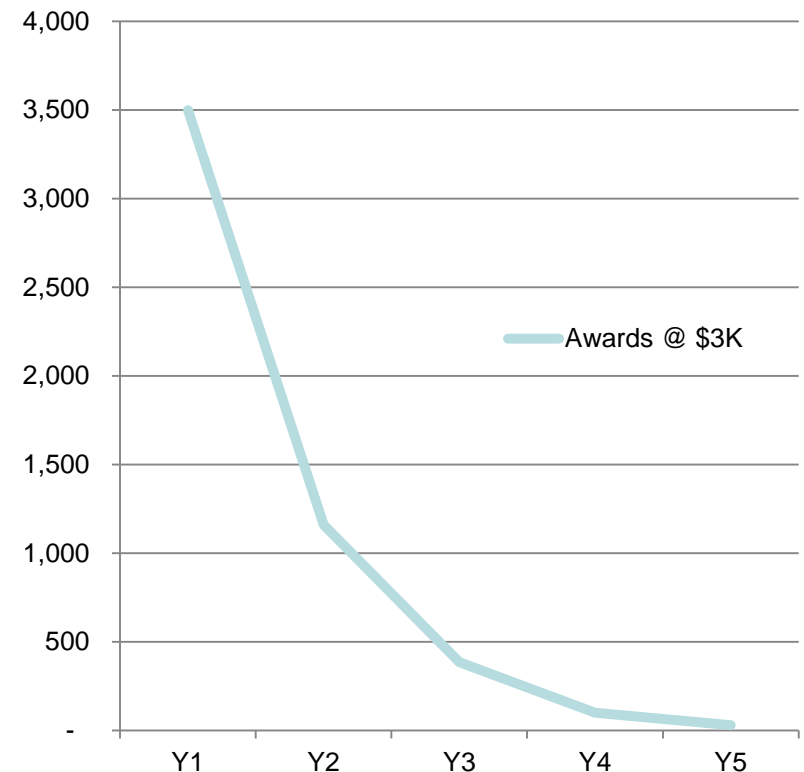
Why Change Now?

- Modernizing our processes
- Keeping up with inflation – 5K in 1998 = over \$7K now, while our threshold is only \$3K
- Gov't requires tagging (only) for Items over \$5K and with a useful life of one year or more.
 - That means 1640 fewer items per year need to be tracked
 - Inventory of items will be smaller and easier for DLCs to kept track of – lowers audit risk

How Will We Do It?

- First “Grandfathering” all current awards – a slow transition...
 - The \$3K policy will remain in effect until current awards end, including awards from proposals already submitted.
 - the proposal you submitted last week will be under the \$3K policy
 - All awards from these proposals will be flagged in Coeus **FLAG = \$3K Award**

Awards at \$3K will expire over time

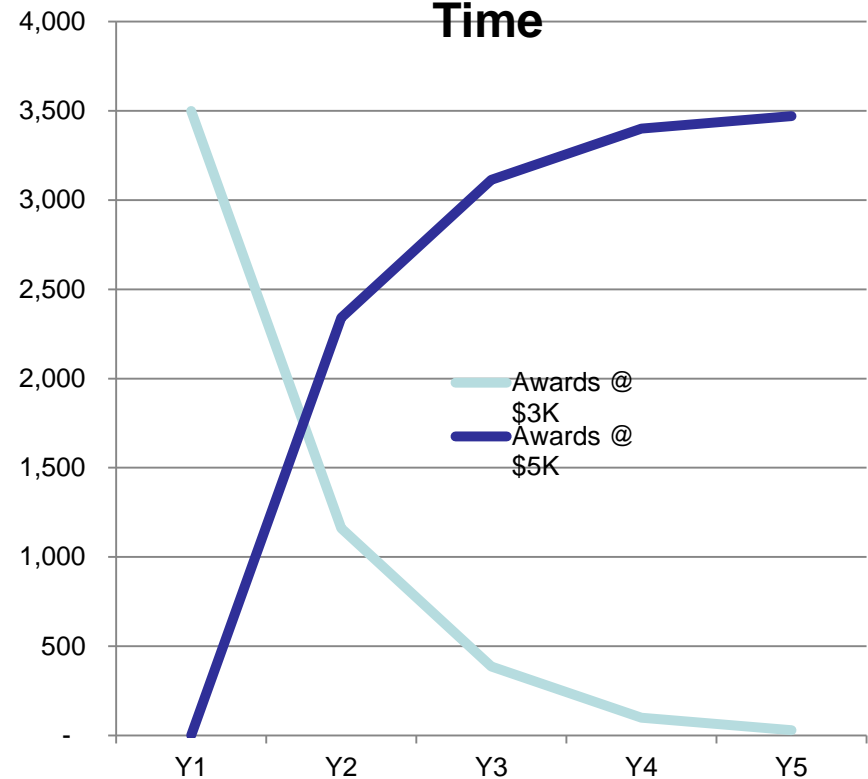


How Will We Do It?

- For all awards from proposals submitted after February 1, 2013:
 - For awards beginning after July 1, 2013, all equipment purchases under the \$5K threshold
 - **Remember:**

FLAG = \$3K

Awards at \$3K and \$5K over Time



\$3k Equipment Threshold Custom Element Flag

- The two custom element flag possibilities are:
 - YES (Funding to which \$3000 threshold applies)
 - BLANK/NO flag (Funding to which \$5000 threshold applies)
- Eventually (after multi year transition) all YES flags on active WBS should become BLANK/NO

File Details Maintain Departmental Admin Central Admin Report Window Help

Display Award : 002577-ALA: Sequence : 1

[Award Detail](#) | [Other Header](#) | [Money and End Dates](#) | [Contacts](#) | [Reports](#) | [Terms](#) | [Special Review](#) | [Investigator](#) | [Key Person](#) | [Comments](#) | [Subcontracts](#) | [Attachments](#) | [Other](#)

3K Equipment Period Ended:

3K Equipment Threshold: No

ARRA Funding:

ARRA Program Source (TAS):

ARRA Sponsor DUNS:

Billing Element:

COI Discl. Req.:

Human Subjects Flag: Unknown if this award has human subjects

MIT Major Initiatives:

Prime Award Number:

RCR Conf. Rec'd or NR:

Source of Funds:

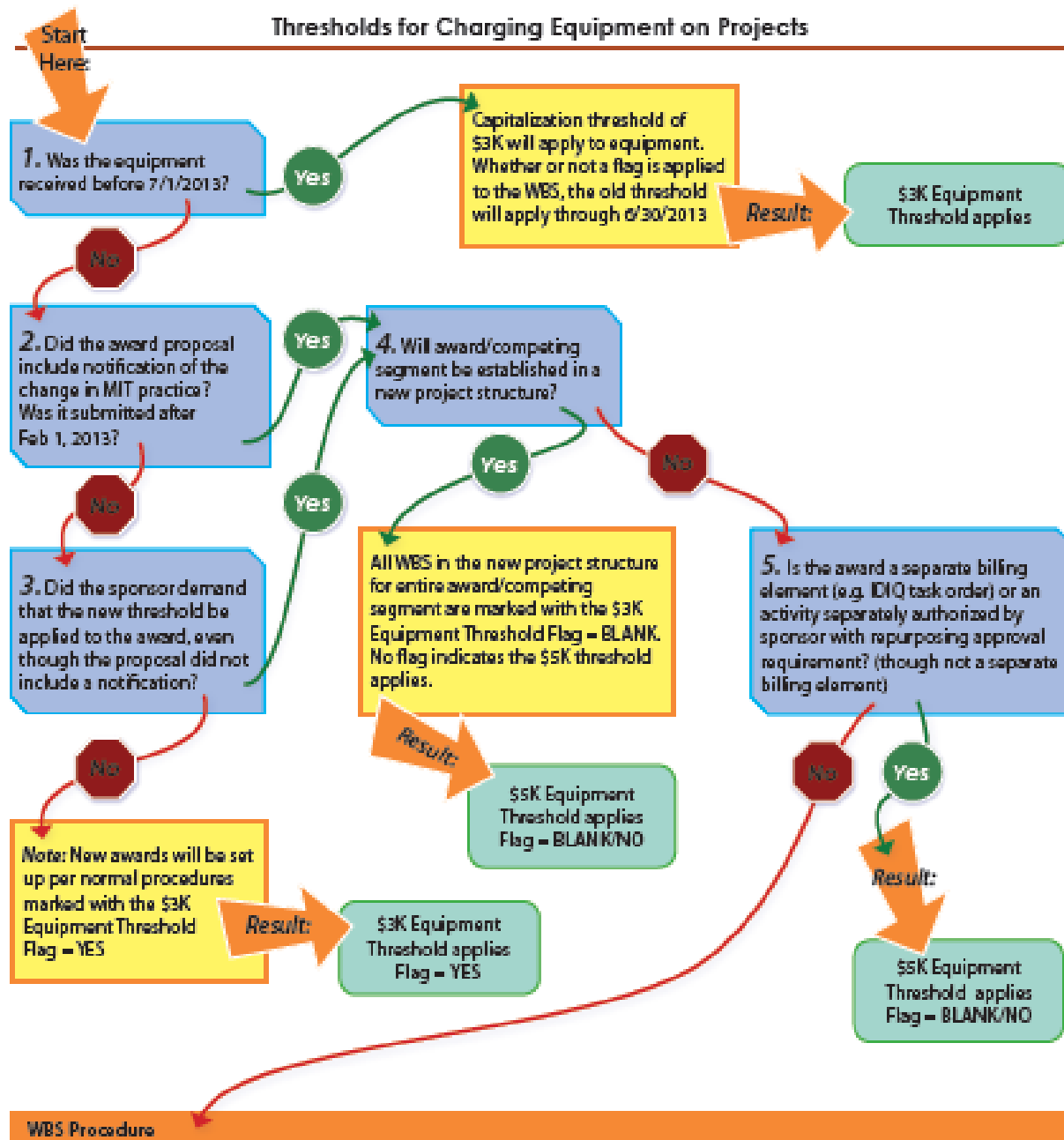
Subcontract Placed:

Subject to E-Verify:

Use of Interest Income: Undetermined or Non Interest Bearing

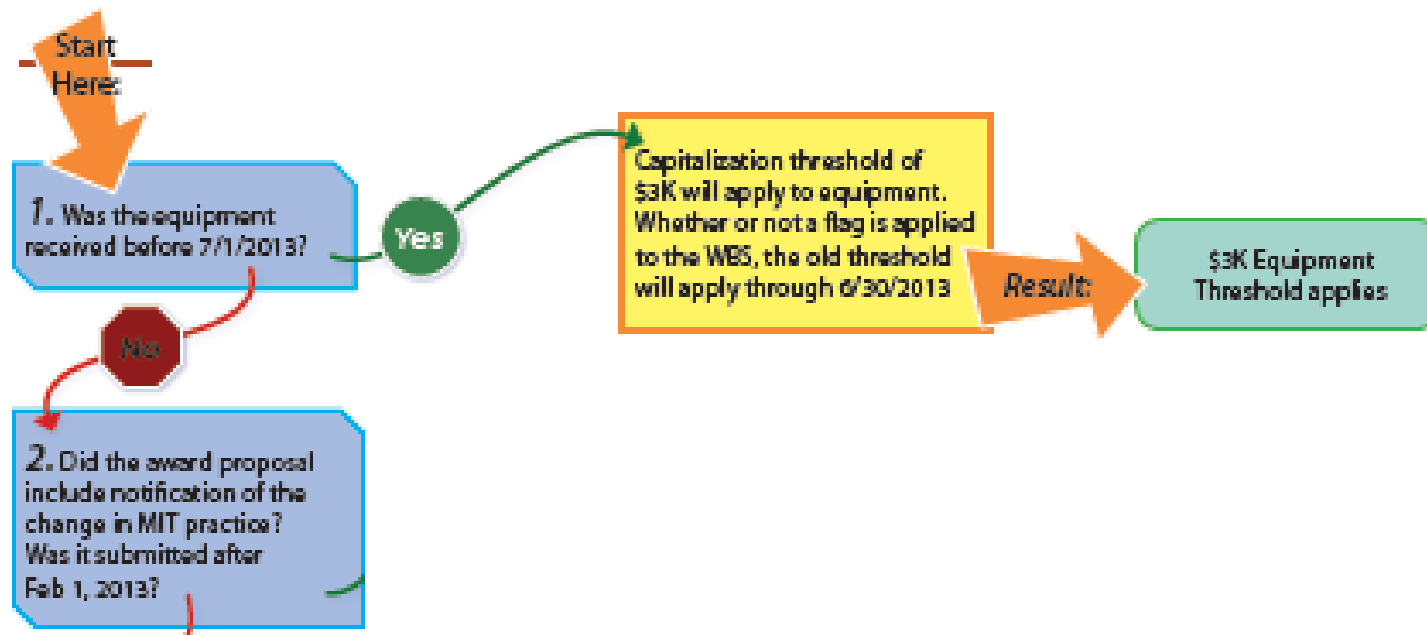
W3C Funding Level: 7900.00

Thresholds for Charging Equipment on Projects



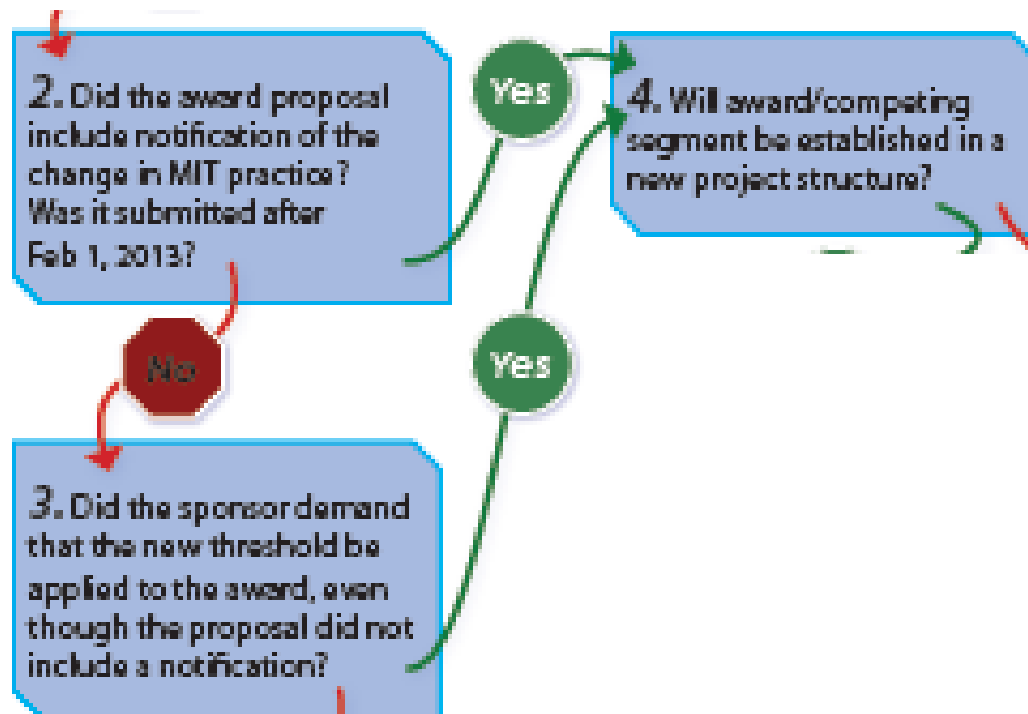
Question 1

Was the equipment received before 7/1/2013?



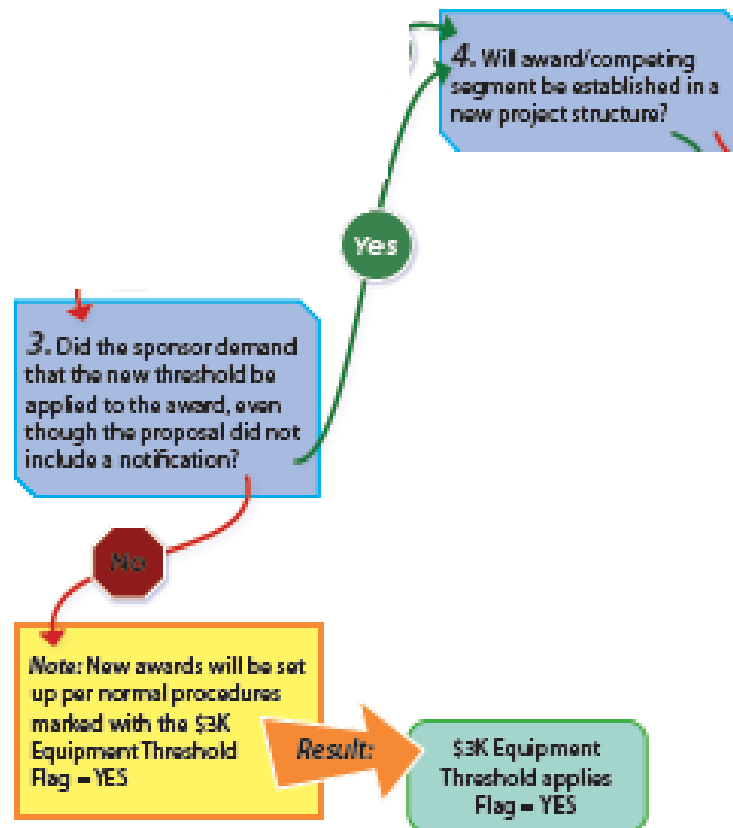
Question 2

Did award proposal include notification of the change in MIT practice? (Was it submitted on or after February 1, 2013?)



Question 3

Did the sponsor demand that the new threshold be applied to the award, even though the proposal did not include a notification?



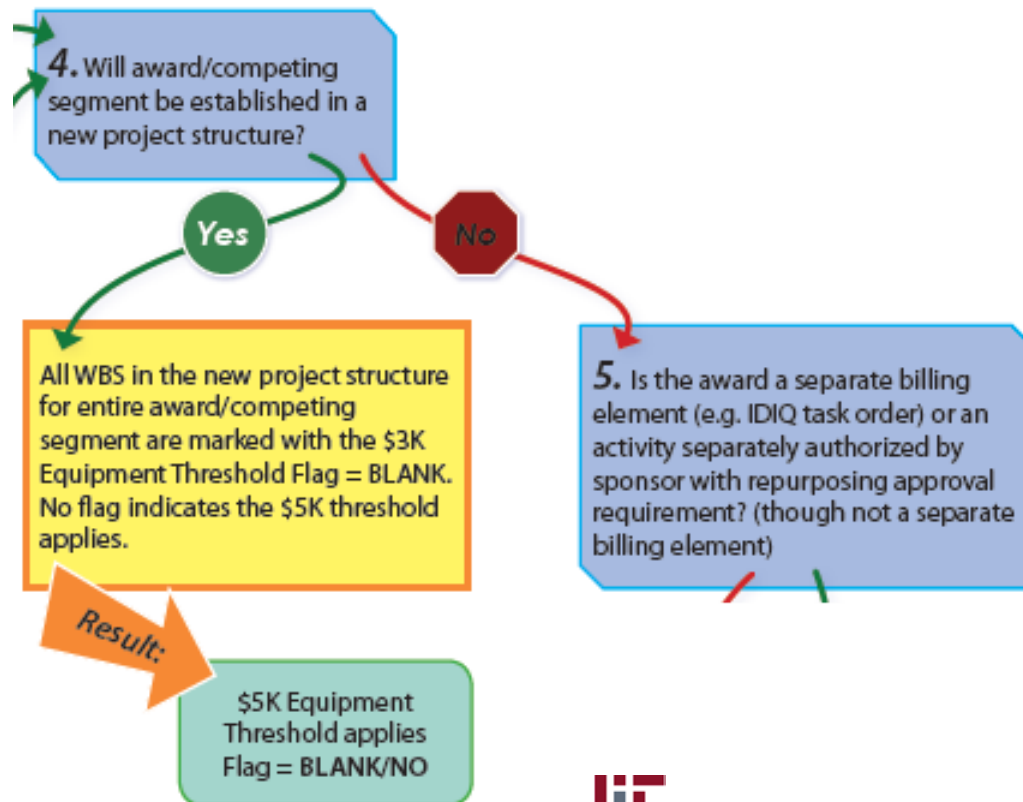
\$3K Equip Threshold Flag Yes

As of February 1, 2013, OSP will mark all existing WBS (and pending proposals) with \$3K Equip Threshold Flag YES, except:

- Multi-sponsor coded WBS, including consortium fee funded WBS
- Structures sponsor-coded “MIT Internal” (not cost sharing)
- All research WBS with costing sheet RESEB, RESSN, RESTDC
- All 1xxxxxx WBS, except for those with costing sheet GENMF (MTDC base)
- All 2xxxxxx WBS and 3xxxxxx WBS, except for those with costing sheet FUNMNX and FUNMFX (MTDC bases) and FUNTDE

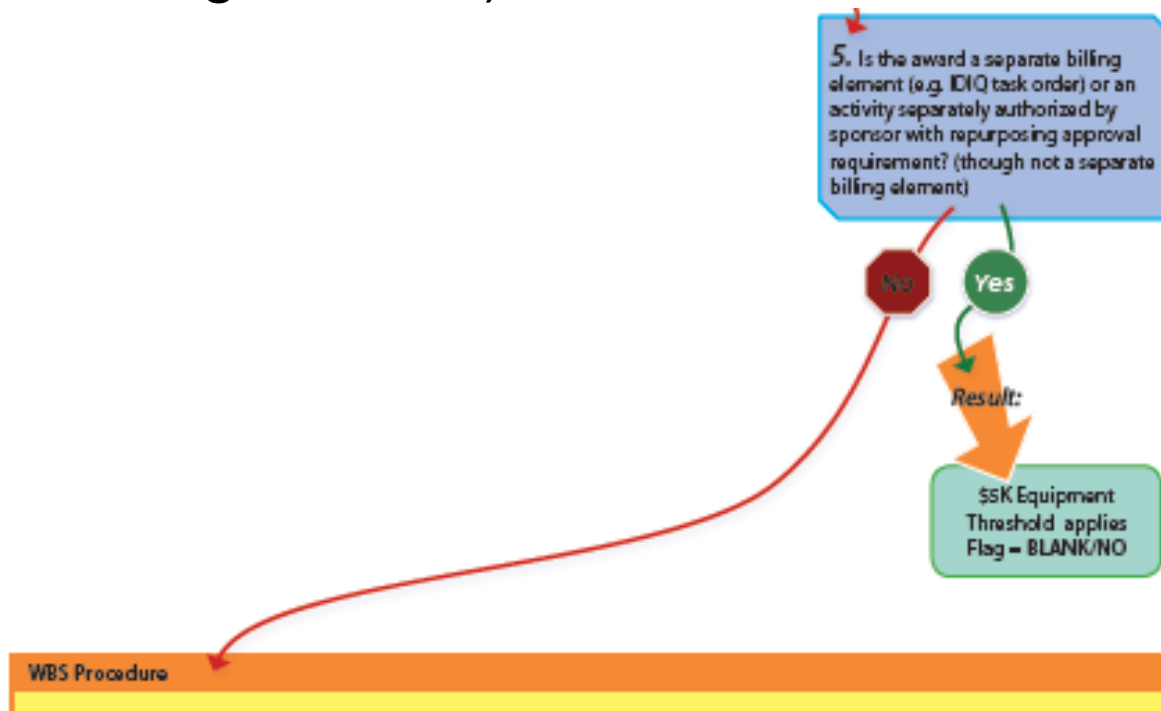
Question 4

Will award/competing segment be established in a new project structure?



Question 5

Is the award a separate billing element (e.g. IDIQ task order) or an activity separately authorized by sponsor with repurposing approval requirement (though not a separate billing element)?



WBS Procedure

WBS Procedure



Step 1: If carryforward of unexpended funds is approved, OSP CA requests total equipment budget being carried forward from prior period. Equipment must be received in 3 months.

Step 2: OSP creates new child WBS for the equipment budget carryforward with a period of three (3) months with the \$3K Equip Threshold Flag = YES. The WBS should not be extended except for extraordinary situations.

Step 3: On all other active project WBS, OSP CA will change \$3K Equipment Threshold Custom Element Flag from YES to NO, indicating a \$5K threshold. In addition, the OSP CA will enter the end date for the prior award period in MM/DD/YYYY format for the Custom Element entitled "\$3K Threshold Period Ended As Of"

EXAMPLES

Example 1

Oscilloscope purchased and received on 6/10/2013 for \$4,000. Department splits the cost between an old award (\$3K policy) and a new award (\$5K policy).

Equipment will be capitalized (GL 421818).

Reason: Item was received before 7/1/2013.

Example 2

Oscilloscope purchased and received on 7/10/2013 for \$4,000. Department splits the cost between an old award (\$3K policy) and a new award (\$5K policy).

Equipment will be minor equipment (GL 421827).

Reason: Item was received after 7/1/2013.

Other changes as of 7/1/2013

- New requests for fabricated equipment will be capitalized at the \$5K.
- Upgrades to existing capital equipment will be changed from the current minimum of \$500. to \$2,000.

No changes to creating equipment records

QUESTIONS